

FOR SALE

RESIDENTIAL - CONDOMINIUM 1,345SQFT (125SQM) / CALL FOR PRICE!

+65 9068 2309



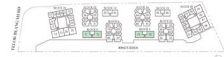
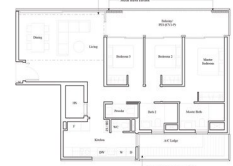
3 - Bedroom Villa

TYPE CV1-P

125 sqm | 1,345 sqft

TYPE CV1-L

146 sqm | 1,572 sqft



RESIDENTIAL - CONDOMINIUM HARBOURFRONT AVENUE, SINGAPORE 097993

- LISTING ID: SGLD86577265
- TENURE: LEASEHOLD 99
- TITLE: N/A
- SIZE BUILT-UP: 1,345SQFT (125SQM)
- SIZE LAND: 6.526AC (2.641HA)
- NO. OF FLOORS: 10
- FLOOR/LEVEL: N/A - N/A
- BED ROOMS: 3
- BATH ROOMS: 2
- MAIDS ROOMS: N/A
- PARKING SPACES: N/A
- LAYOUT TYPE: OTHER
- FACING: N/A
- VIEWING: OTHER
- SELLING PRICE: **CALL FOR PRICE!**
- COMPLETION YEAR: 2025
- CONDITION: ORIGINAL CONDITION
- FURNISHING: PARTIALLY FURNISHED
- LISTING DATE: FEB 10, 2021

THE REEF AT KING'S DOCK

Condominium for Sale: Partially furnished, 3 bedroom, 2 bathroom. Completed in 2025, this unit is in original condition. Tenure: Leasehold 99 Located in Singapore's district D04 near Harbourfront, Telok Blangah in the area Keppel (Central region).

INTERIOR FACILITIES

- Air-Conditioning
- Bombshelter
- Balcony

OTHER INTERIOR FEATURES

- Cooker Hob/Hood
- Dishwasher
- Dryer
- Fridge

EXTERIOR FACILITIES

- 24 Hours Security
- Clubhouse
- Covered Car Park
- Jacuzzi

VISIT THIS PROPERTY AT: <https://www.pravinproperties.com.sg/property/SGLD86577265>



PRAVIN KUMAR - HUTTONS ASIA PTE LTD

3 Bishan Place #05-01 CPF Bishan Building
D20, 579838, Singapore

+65 9068 2309
WhatsApp Me

pravin@pravinproperties.com.sg

L3008899K
R014139B

<https://www.pravinproperties.com.sg>



Scan QR Code

Huttons® Call for Viewing
The Agency of Choice +65-90682309